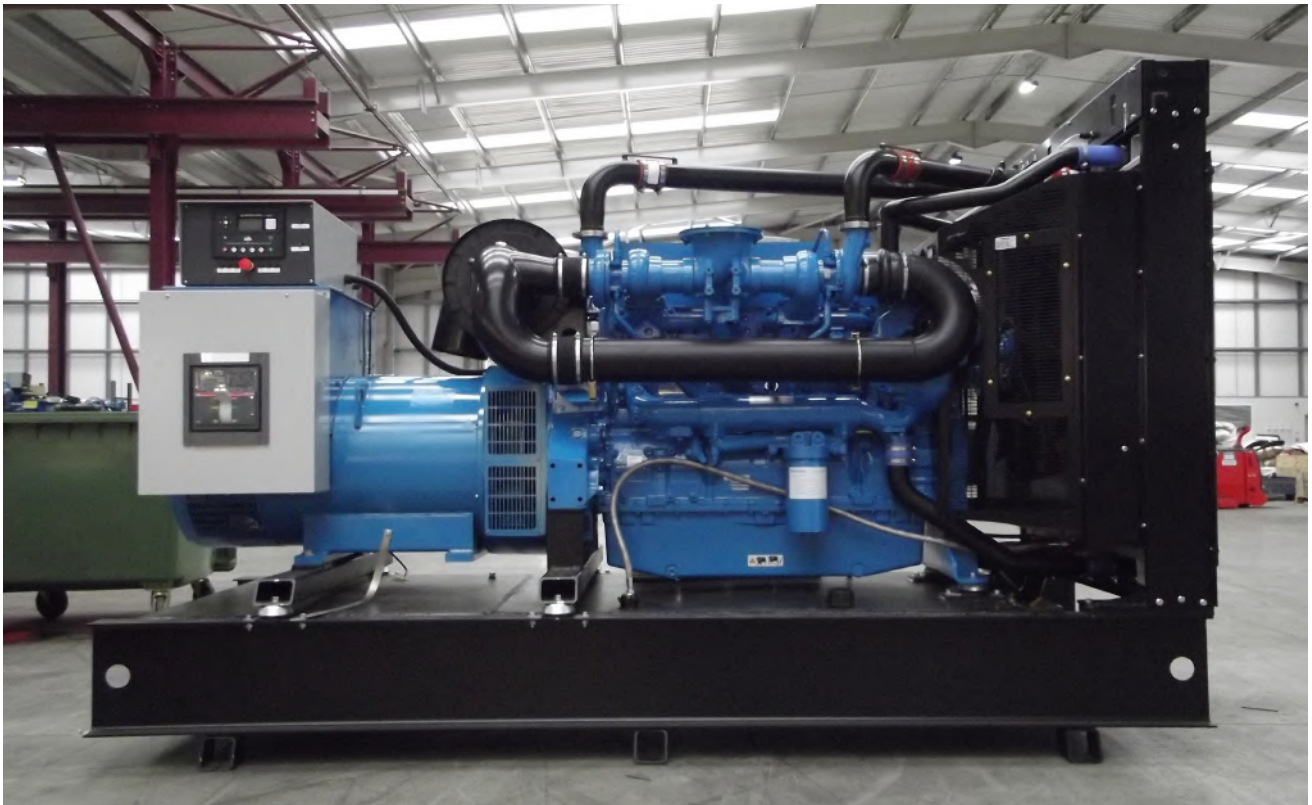


650 KVA PERKINS NEWAGE DIESEL GENERATOR



Dimensions

CANOPIED				OPEN			
Length (cm)	Width (cm)	Height (cm)	Weight (kg)	Length (cm)	Width (cm)	Height (cm)	Weight (kg)
507	160	226/281	5800	340	154	227	4700

All dimensions and weights are approximate and should not be used for installation Canopy height includes silencer

General Specifications

KVA (Prime Rating) :	650
Engine Type :	Perkins 2806A-E18TAG2A
Alternator:	Newage HCI 544F
Volts :	400 / 230 v
Cycles Hz :	50
R.P.M. :	1500
Fuel Consumption at 75% :	97 Litre per hour
Fuel tank capacity:	1070 Litres



650 KVA PERKINS NEWAGE DIESEL GENERATOR

Generating Set

- + Set Mounted Tropical Duty Radiator
- + Engine Driven Cooling Fan with Protection Guard
- + Radiator Stone Guard
- + Fuel, Lubricating Oil and Air Filter with Restriction Indicator
- + Mechanical governing at 1500/1800 RPM in accordance with BS5514A1 (1)
- + 24 Volt electric start with charging alternator
- + Steel base frame with integral 8 hour capacity fuel tank, complete with contents gauge, steel wire braded fuel lines, fill, vent and drain fittings
- + Anti vibration mountings fitted between the engine/alternator feet and base
- + Set mounted maintenance free lead acid battery with leads and terminals
- + Exhaust flexible section with connections
- + Silencer supplied loose (open set only)
- + Load and function tests
- + Paint finish to our standard scheme
- + Comprehensive user manual
- + Protection Switches for :
 - o High Engine Temperature
 - o Low oil pressure
 - o Wiring to Control Panel

Manual Start

- + 3 pole MCB/MCCB Mounted in control panel
- + Deep Sea 7120 module

ATS Panel

- + 4 Pole changeover contactors (2)
- + Indicators for
 - o Mains available
 - o Mains on load
 - o Generator Available
 - o Generator on load
 - o Phase failure monitor

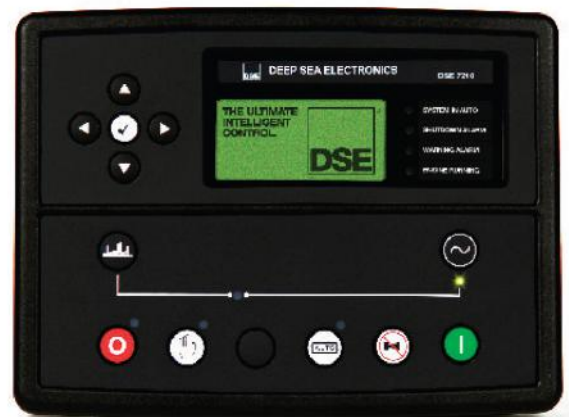
Acoustic Canopy Features

- + Water and dust proof design
- + The sound level of the basic models is 85 dba @ 1 Meter
- + The material is Zinc plated mild steel
- + The Canopy is finished in a powder coated RAL 9010 (White)

Auto Start

- + Constant Potential battery charger
- + Battery charger On/Off pushbutton
- + Deep Sea 7120 module
- + Off/Auto/Manual selector keyswitch

Deep sea 7120 module



Eagle Generators Ltd
Bagnall Street
Great Bridge, DY4 7BS, UK

Tel: +(0)121 557 0270
Email: sales@dieselgenerators.com
Website: www.dieselgenerators.com
Company Registration No. 7772136
VAT registration no. 120 5594 37



The Association of Manufacturers of
Power Generating Systems
www.amps.org.uk